



TRAVIS INDUSTRIES
HOUSE OF FIRE

564 SS Fireback Installation

SKU # 96100179 (Brick / Herringbone) SKU # 96100182 (Diamond / Stucco)

SKU # 96100181 (Seattle Rock Creek) SKU # 96100183 (Basket Weave / Quilt)

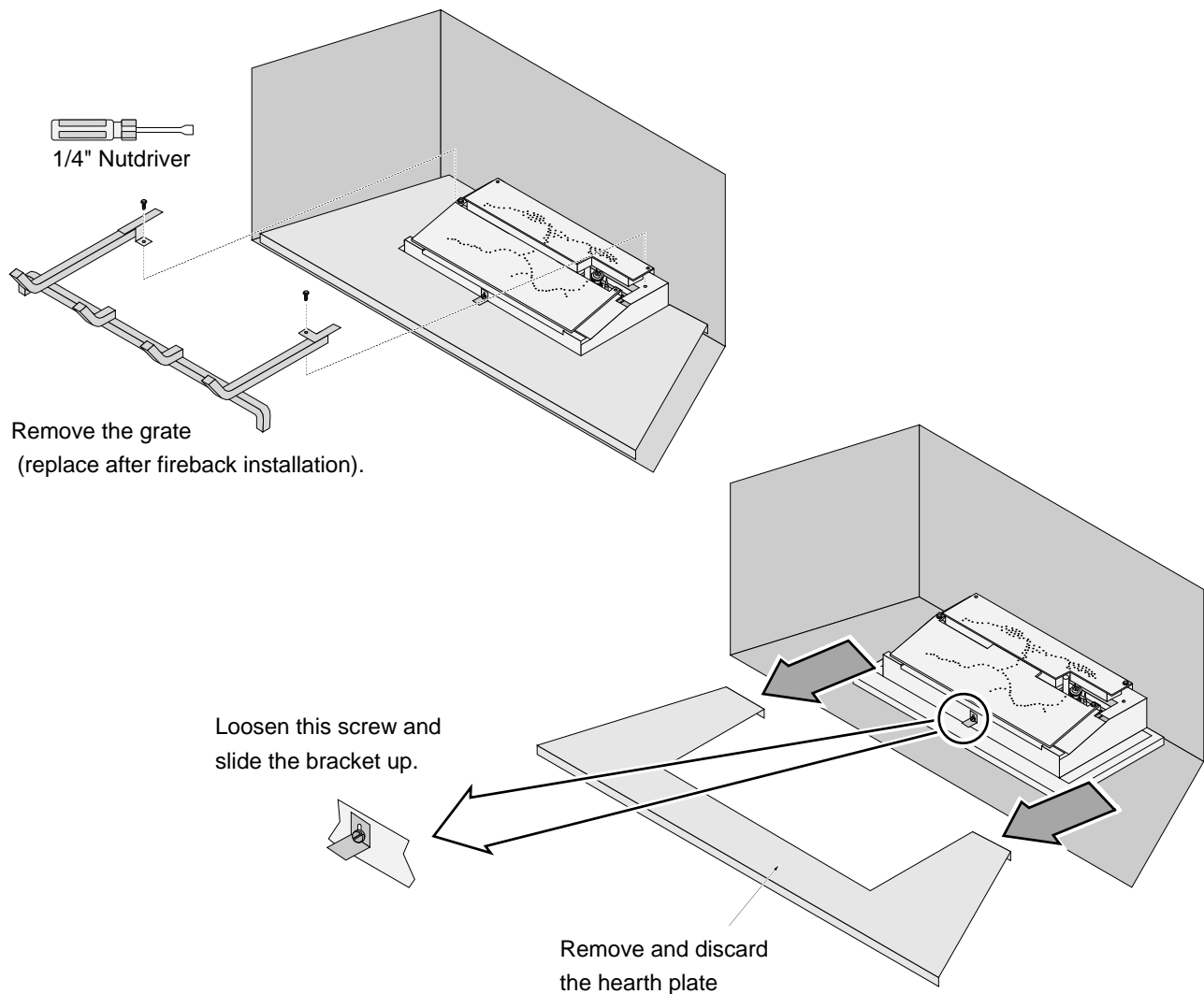
Packing List

- Rear Fireback
- (2) Side Firebacks
- (2) Floor Firebacks

Installation

WARNING Turn off gas to the appliance and make sure it has fully cooled prior to conducting service.

- 1 Remove the glass frame and logs (see the installation manual for details).
- 2 Remove the grate (replace after fireback installation). Remove and discard the hearth plate.





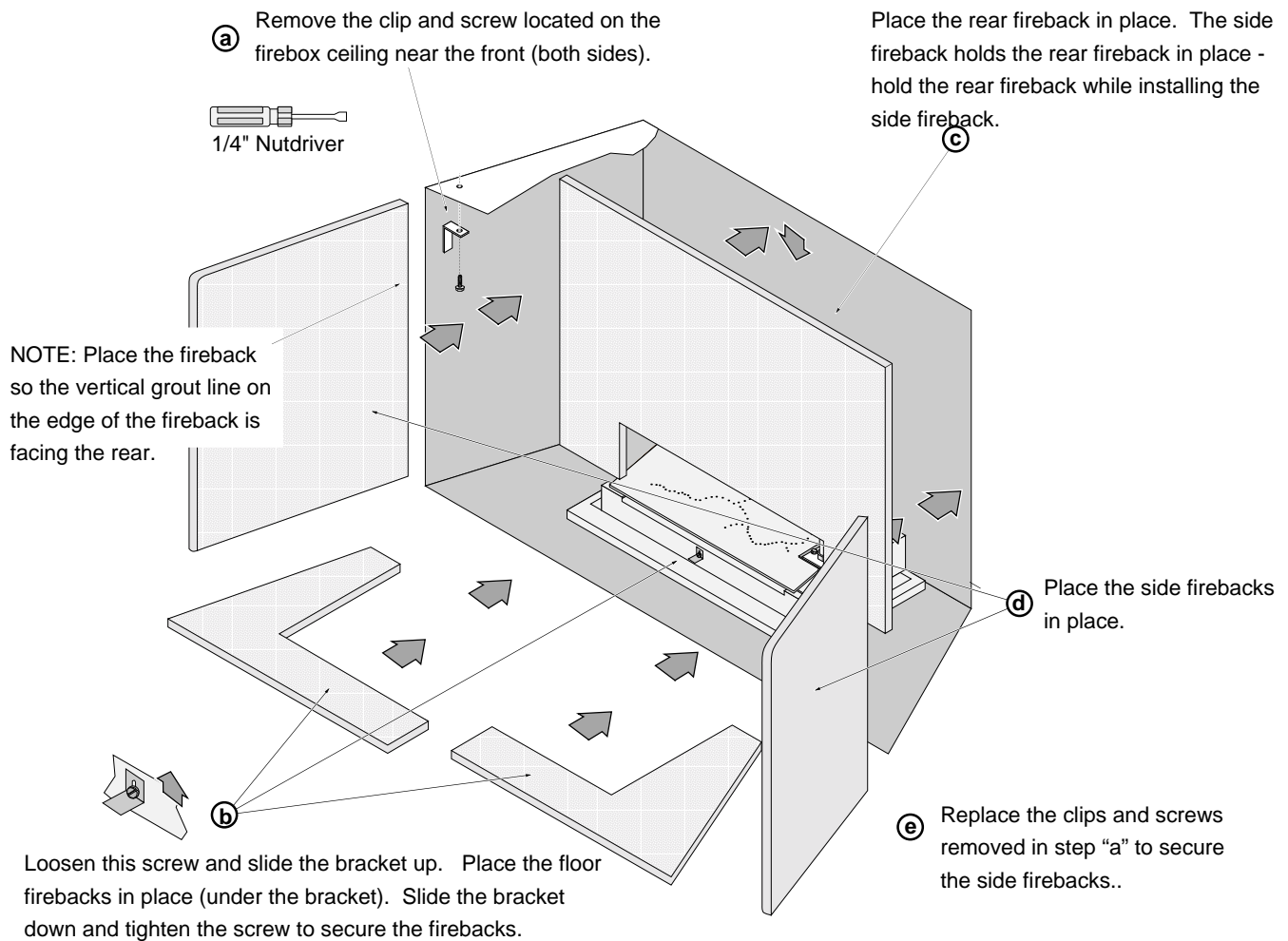
TRAVIS INDUSTRIES
HOUSE OF FIRE

564 SS Fireback Installation

SKU # 96100179 (Brick / Herringbone) SKU # 96100182 (Diamond / Stucco)

SKU # 96100181 (Seattle Rock Creek) SKU # 96100183 (Basket Weave / Quilt)

- 3 Install the firebacks following the directions below. Select either the straight brick or herringbone brick pattern to face outwards.



Due to the construction of the ceramic firebacks, you may need to re-position the firebacks to achieve the correct alignment.

- 4 Restore the fireplace to the correct configuration.