

Packing List

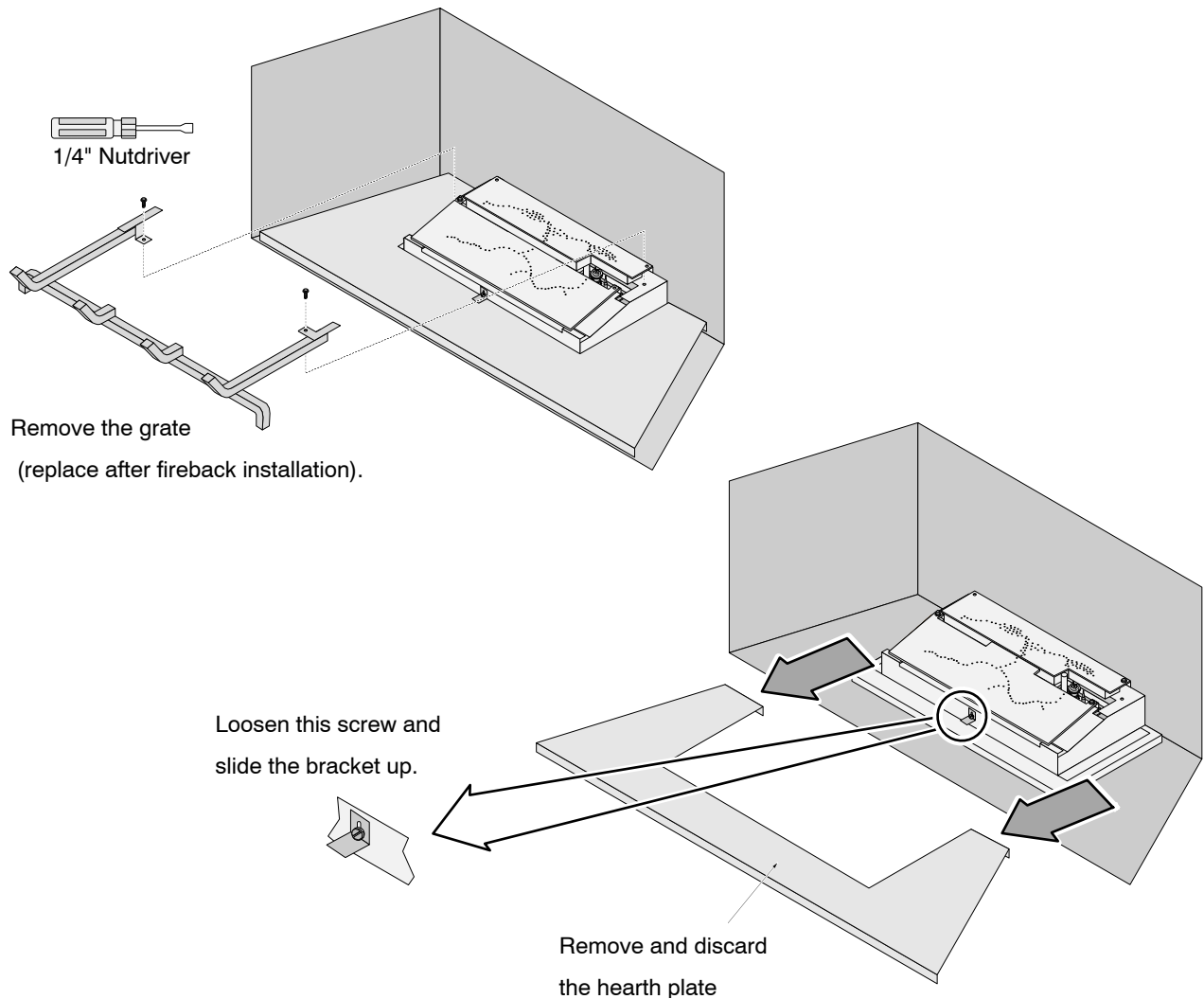
- Floor Fireback
- (2) Side Firebacks
- Rear Fireback

Installation

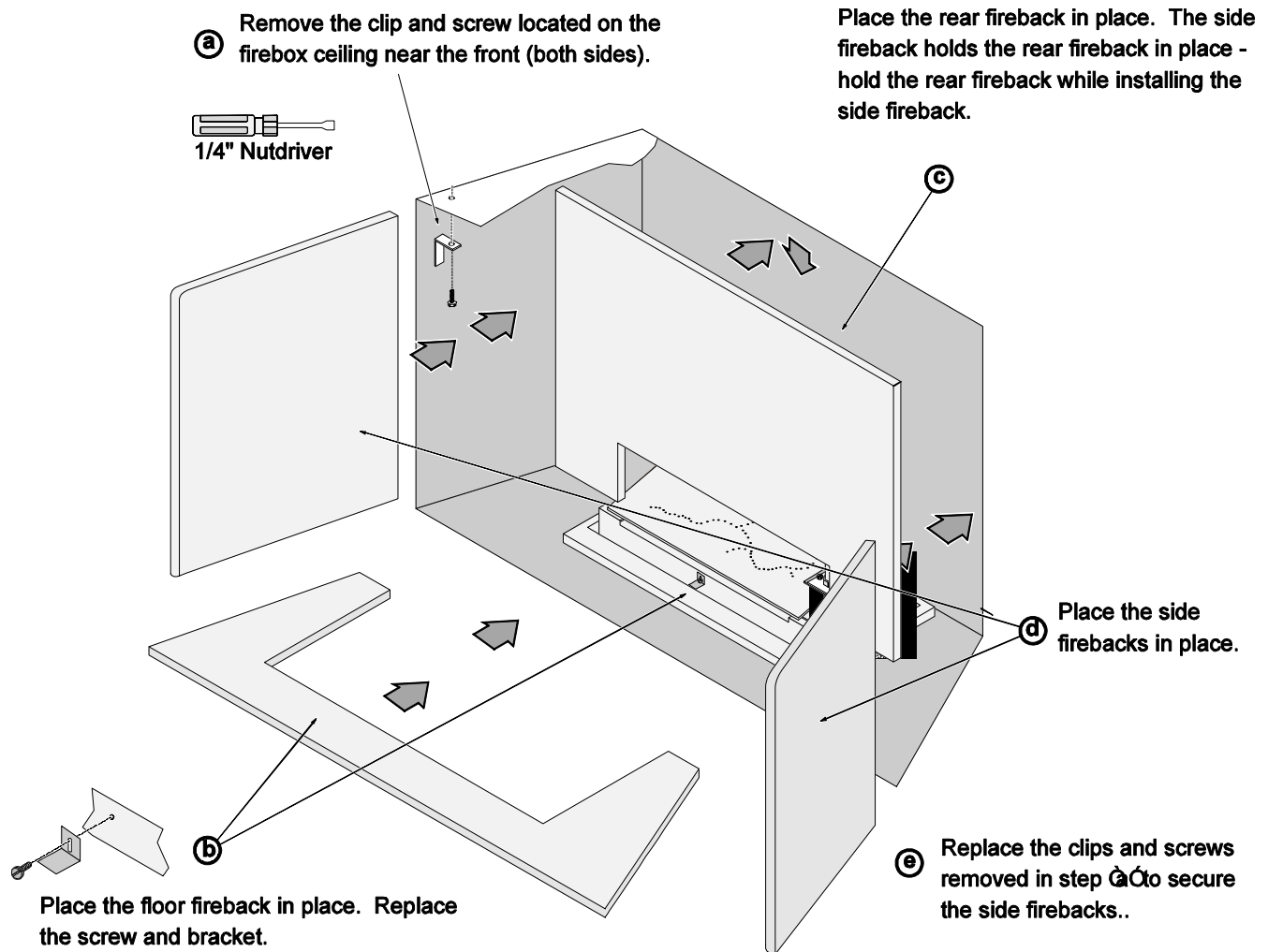
WARNING:

Turn off gas to the appliance and make sure it has fully cooled prior to conducting service.

- 1 Remove the glass frame and logs.
- 2 Remove the grate (replace after fireback installation). Remove and discard the hearth plate.



3 Install the firebacks following the directions below.



4 Restore the fireplace to the correct configuration.

Cleaning

We recommend cleaning the enamel surface with glass cleaner and a soft cloth.