



Firestyles for Life

8 X 8 INSERT PANEL FOR SEATTLE E

SKU # 96100297

COVERS 44" W X 34" H

MIN. FIREPLACE: 27" H X 32" W X 10.5 D



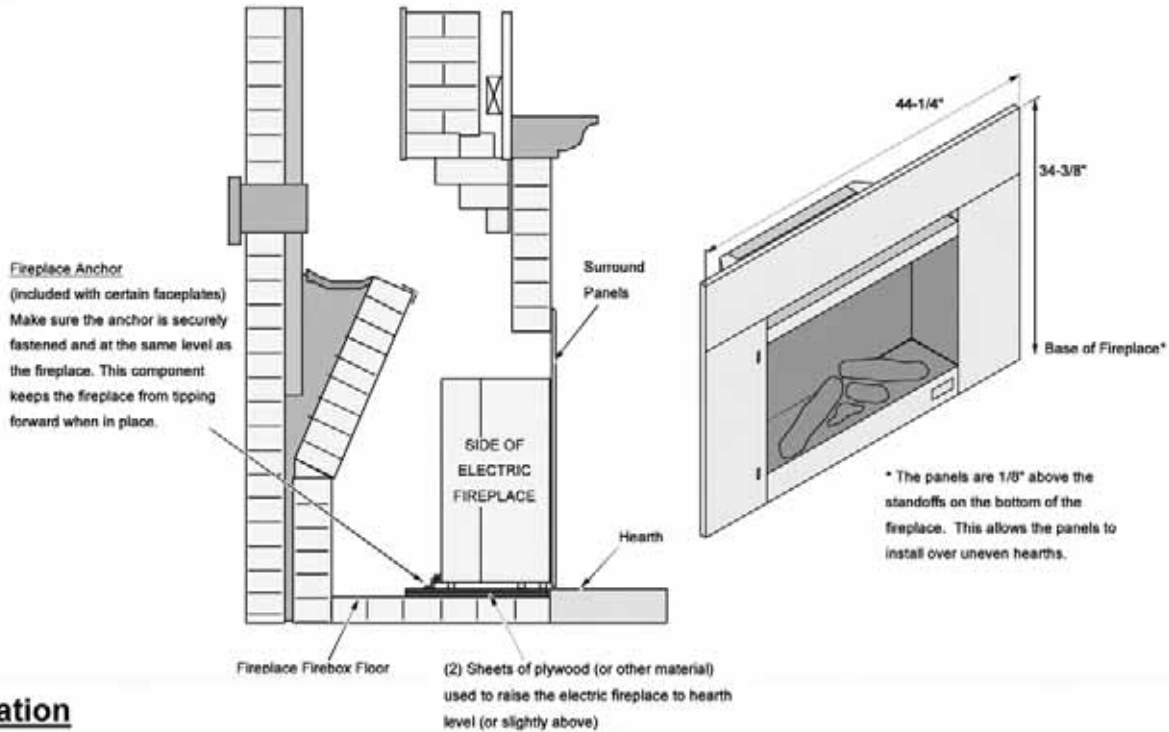
FOR FOREST GROVE TRIM AND VICTORIAN FACE ONLY

564 Electric Surround Panel Installation Instructions

Installation Preparation and Sizing

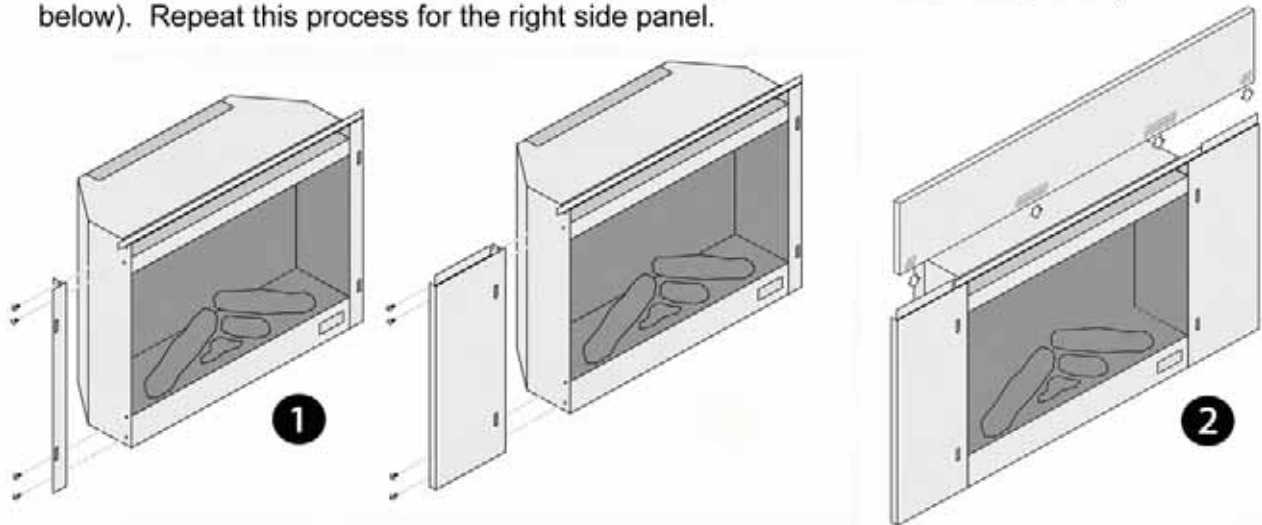
These surround panels are used with the 564 Electric fireplace when it is installed into an existing masonry or metal (zero-clearance) fireplace. Before installing the fireplace, thoroughly clean the interior of the fireplace. We recommend painting the fireplace interior with latex paint to prevent odors from the fireplace from transferring into the room from the blower inside the electric fireplace.

Fireplaces typically have a firebox floor that is recessed below the hearth (see illustration below). In these fireplaces install a sheet of plywood or other suitable material on the firebox floor to raise it to a level that is equal to, or slightly ($1/8"$ or less) above the hearth. This allows the fireplace to remain level while it is slid into position.



Installation

- 1 Remove the left side bracket on the fireplace and replace it with the left side panel (see illustration below). Repeat this process for the right side panel.



- 2 The top panel has joggles on the back of the panel that slide over the flanges on the fireplace and panels. Attach the top panel, making sure the ends are square with the side panels.

Slide the fireplace into position. The side panels have an angled snipe at each bottom corner to allow the power cord to exit the side panels.