



Wood Insert Adjustable Offset Adapter

SKU 96200355

Compatibility

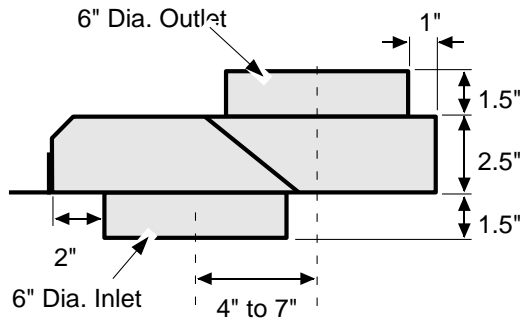
- Small Flush Wood Insert
- Flush Wood Plus Insert
- Large Flush Wood Insert
- Lopi Revere and 1750i
- Lopi Freedom
- Lopi Freedom Bay

Packing List

- Offset Adapter
- (8) Self-Drilling Screws

Dimensions

The offset adapter is adjustable to allow for a customized fit into the fireplace.



Warning Regarding Draft

Use of an offset adapter may degrade draft performance of the insert. To minimize the adverse effects, set the adapter to the minimum offset possible.

Installation

1. Calculate the required offset for the adapter (between 4" and 7"). This is done by measuring the difference between the insert's flue outlet within the fireplace cavity and the chimney liner position inside the fireplace.
2. Using gloves, slide the two-part adapter to the correct offset (grasp the inside of the flue collars to separate).
3. Use the 6 included self-drilling screws to secure the top of the adapter to the bottom of the adapter (see photo below). 3 holes are provided on the top and bottom for this purpose.





Wood Insert Adjustable Offset Adapter

SKU 96200355

4. Follow the directions below to finalize the installation.

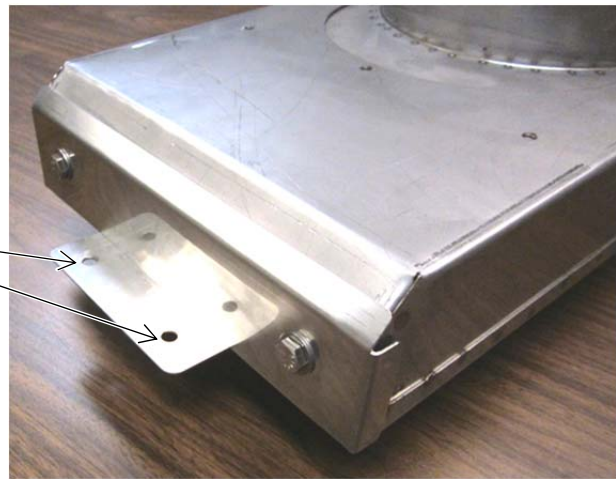
Small Flush Wood Insert:

Remove the flue adapter from the insert and attach the offset adapter to the flue adapter (use the gasket tape included with the insert to seal the flue). We recommend pre-drilling the holes for the screws (the stainless collar on the offset adapter is difficult to drill). Attach the offset adapter to the chimney liner, making sure the connection is sealed. Place the insert into position and secure the flue adapter (see the manual for details).

All Other Inserts:

Place the flue adapter on top of the insert. Use the two included screws to secure the adapter to the insert (see photo below). Remove the adapter (keep the screws) and attach it to the chimney liner, making sure the connection is sealed. Slide the insert into position and re-attach the offset adapter to the top of the insert.

Use two of the included screws to secure the adapter to the insert (all appliances except Small Flush Wood Insert)



Cleaning

This clean-out cover may be removed to access the inside of the offset adapter.

